

X8544 Pet Park – A3 size, 4 color front + 1 color back (4C+1C)

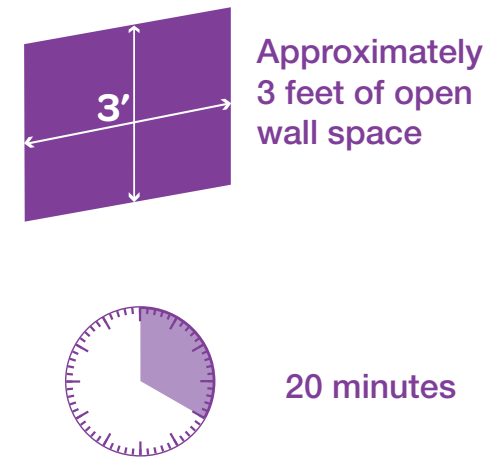
FRONT (COLOR)

Just for reference, NOT for printing.

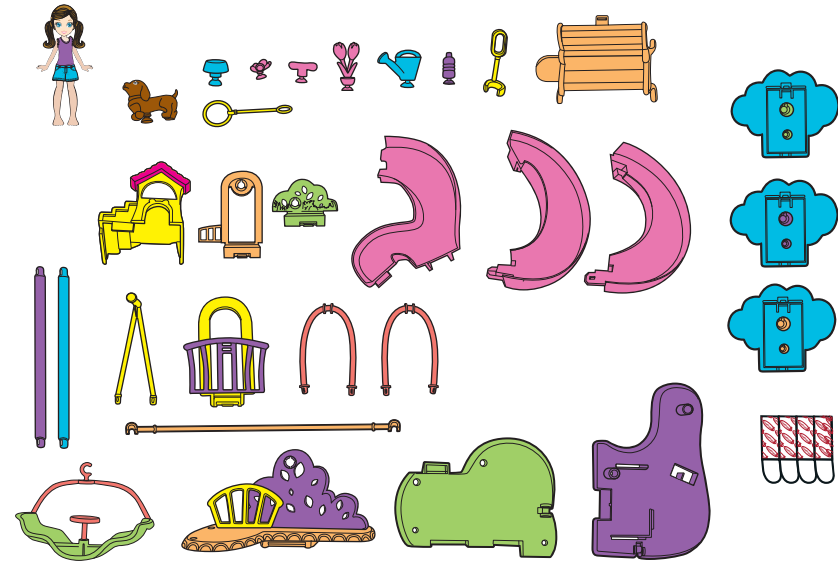
僅供參考，請勿用於印刷。



You will need:



Contents:



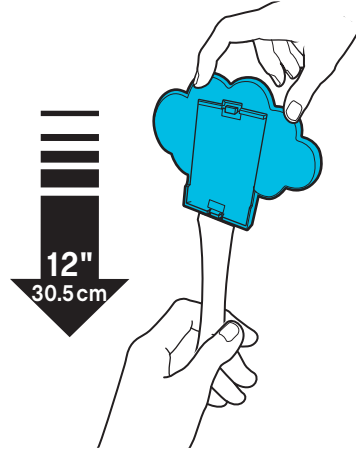
Before applying Command® Strips:

- CAUTION: NEVER use with wallpaper. May not adhere well to vinyl surfaces.
- CAUTION: NEVER hang items over beds.
- Make sure the wall surface is clean and dry. If cleaning is necessary, 3M recommends using isopropyl rubbing alcohol. DO NOT use household cleaners.
- Apply strips to surfaces above 50°F (10°C). Adhesive could lose adhesion above 105°F (40°C).

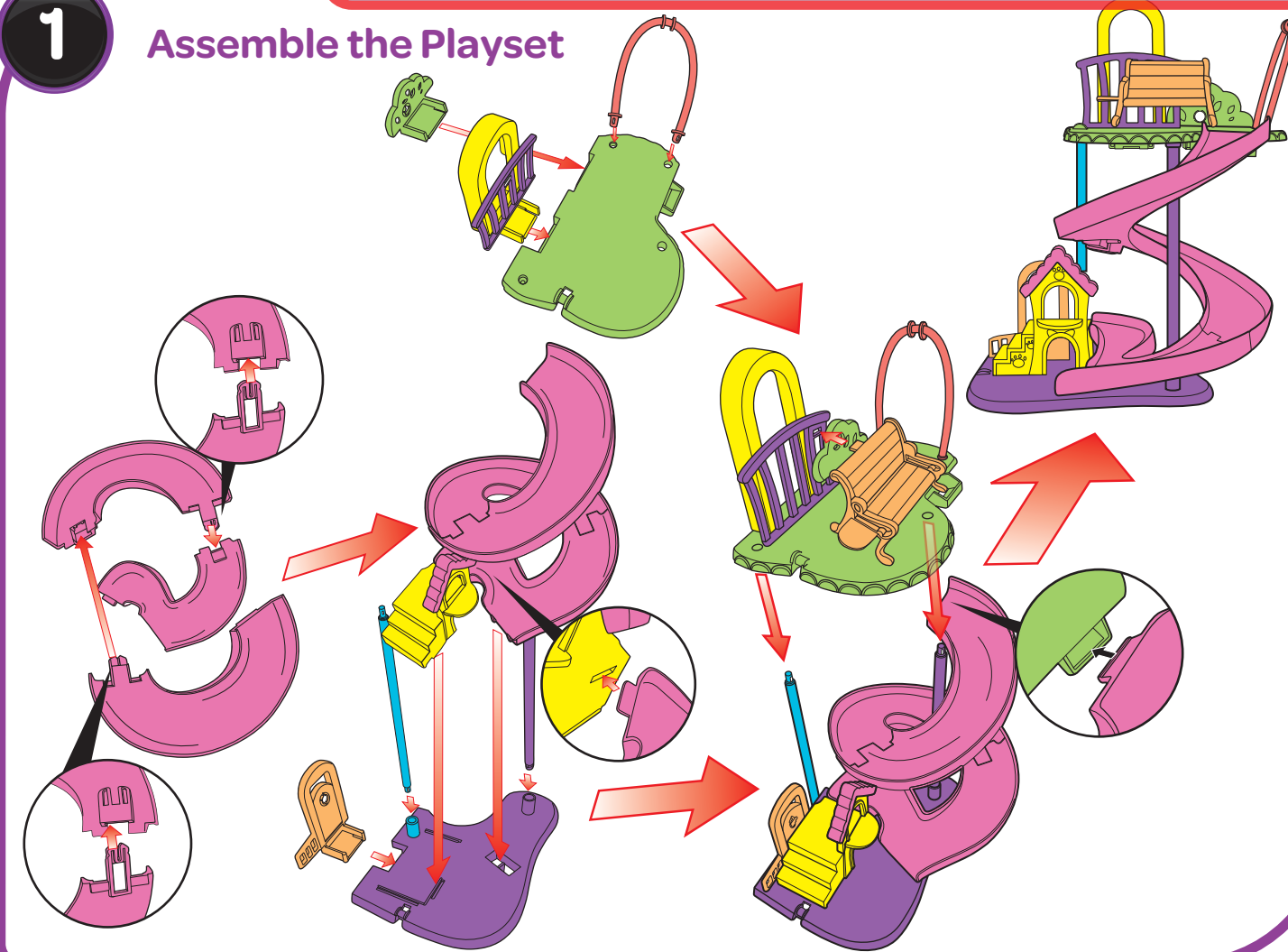
When removing brackets from wall:

- NEVER pull strip towards you.
- NEVER press bracket against wall.
- ALWAYS hold bracket gently in place to prevent it from hitting fingers.
- ALWAYS pull tab on Command® Strip SLOWLY AND STRAIGHT DOWN WALL. Stretch at least 12 inches (30.5 cm) until bracket and strip release.

Purchase medium Command® Refill Strips to reapply to your wall.



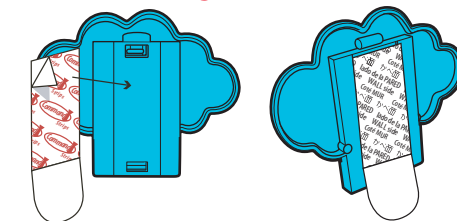
1 Assemble the Playset



2 Apply Command® Strips

Separate strips. Remove red-printed liner from Command® Strips and apply to back of brackets as shown. Make sure the strip tab is accessible for future removal.

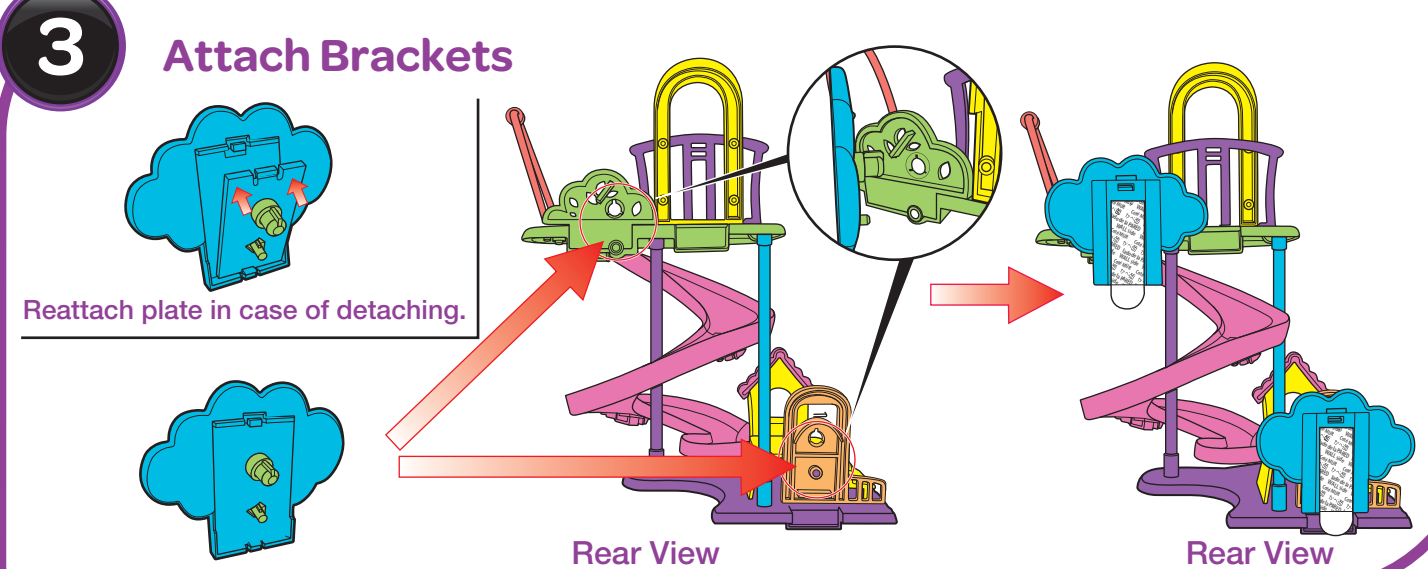
Red Printing = On Bracket



Black Printing = On Wall

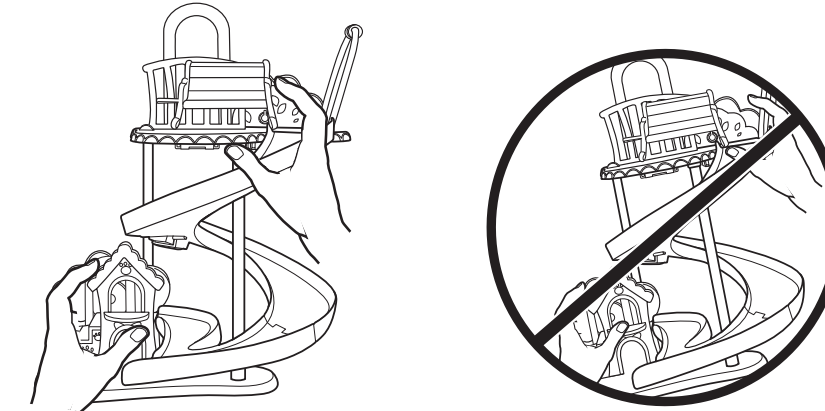
NOTE: DO NOT PULL BRACKET OFF WALL without reading removal instructions.

3 Attach Brackets



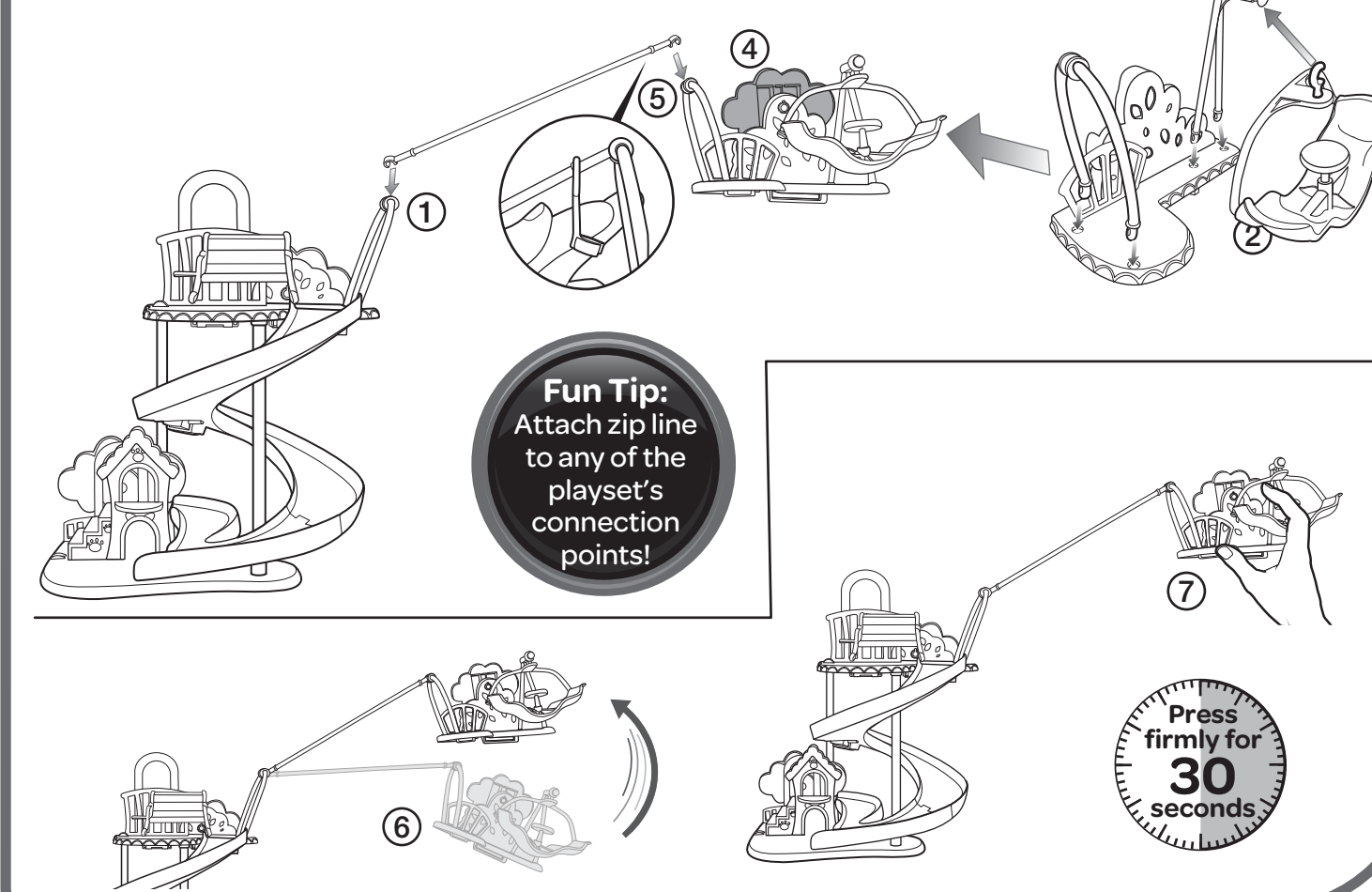
4 Hang Main Playset on Wall

1. Remove black-printed liner from Command® Strip.
 2. Position playset level against the wall.
 3. Press brackets firmly onto wall and hold for 30 seconds.
- NOTE: For optimal adhesion performance, 3M recommends waiting 1 hour before playing.



5 Connect Secondary Play Areas

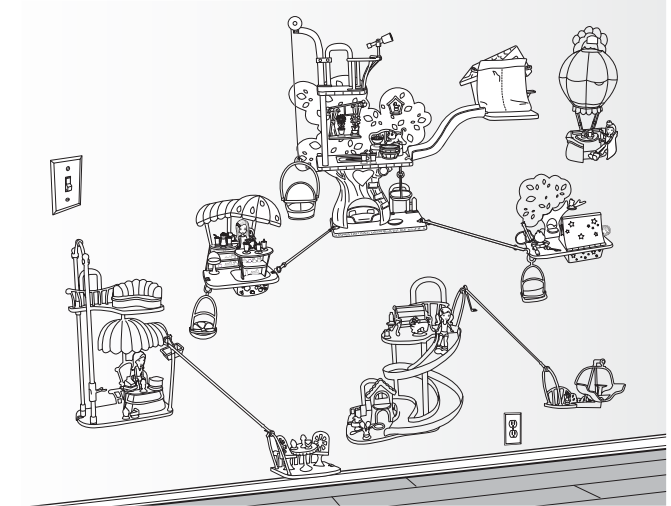
1. Attach zip line to playset on wall.
 2. Assemble play area.
 3. Apply Command® Strip to bracket and remove backing (see Steps 2 & 4.1).
 4. Attach bracket to play area (see Step 3).
 5. Attach zip line to play area.
 6. Position play area to desired location, level against the wall.
 7. Press play area firmly onto wall and hold for 30 seconds.
- NOTE: For optimal adhesion performance, 3M recommends waiting 1 hour before playing.



6 Connect with other Wall Party™ Playsets (sold separately)

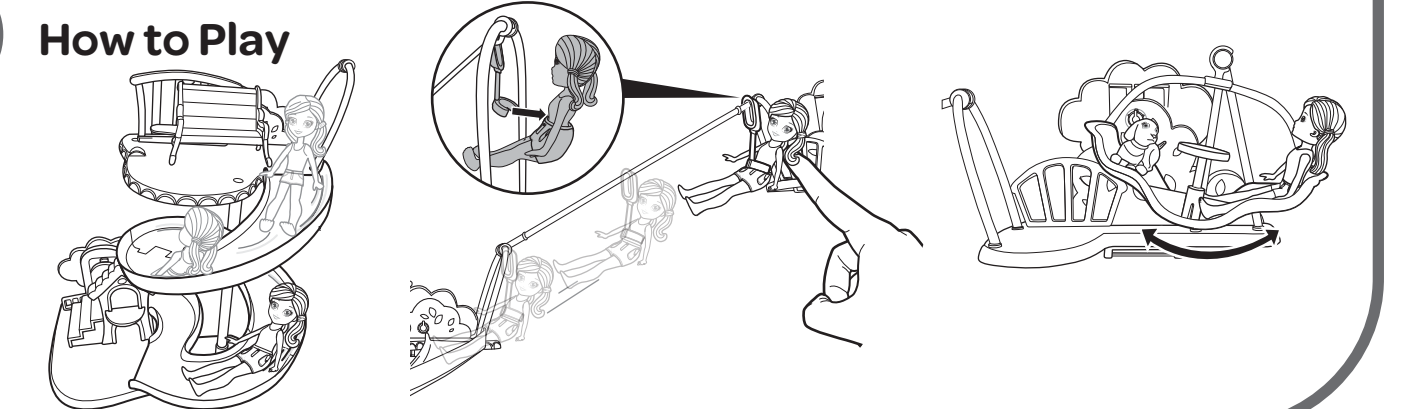
1. Follow steps 5.1 – 5.6 and apply Secondary Play Area steps to other playsets.
2. Connect all playsets together to create your own Wall Party™.

NOTE: Wall Party™ Balloon Ride does not connect to other playsets.



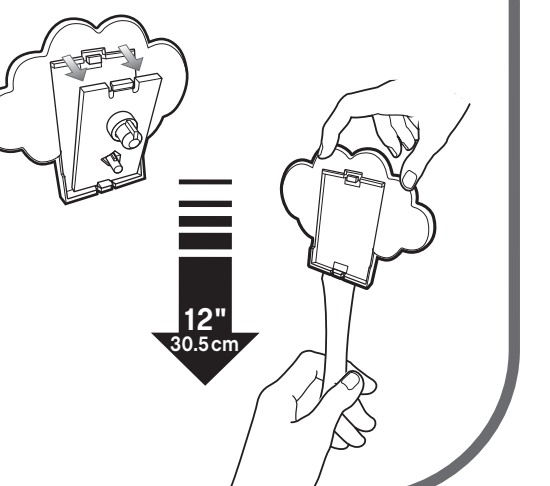
Fun Tip:
Interchange zip lines, swings, slide, and elevator with other playsets!

7 How to Play



8 Reattaching & Removal

1. Mounting plates are designed to break away from the set without causing surface damage.
2. To remove brackets from the wall entirely:
 - a. NEVER pull strip towards you.
 - b. Hold bracket gently to prevent it from snapping fingers. DO NOT press against wall.
 - c. Grab tab on Command® Strip and SLOWLY STRETCH STRAIGHT DOWN ALONG WALL AT LEAST 12 INCHES until bracket and strip release.
3. Purchase medium Command® Refill Strips to reapply to your wall.



Command® Strips are a product of 3M. For further information visit command.com.
NOTE: Apply strips to surfaces above 50°F (10°C). Adhesive could lose adhesion above 105°F (40°C).
CAUTION:
DO NOT use with wallpaper. May not adhere well to vinyl surfaces.
DO NOT hang items over beds.
3M and Command are trademarks of 3M.
© 3M 2012. All Rights Reserved.
Mattel, Inc., 636 Girard Avenue, East Aurora, NY 14052, U.S.A.
©2012 Mattel and/or Origin Products Ltd., Richmond, Victoria, 3121. Consumer Advisory Service - 1300 135 312. Mattel East Asia Ltd., Room 1106, South Tower, World Finance Centre, Harbour City, Tsimshatsui, HK, China. Diimport & Diedarkan Oleh: Mattel SEA Ptd Ltd. (983532-P) Lot 13.5, Menara Lien Hoe, Persiaran Tropicana Golf Country Resort, 47410 PJ. Tel: 03-78803817, Fax: 03-78803867.
service.mattel.com



X8545 Cafe – A3 size, 4 color front + 1 color back (4C+1C)

FRONT (COLOR)

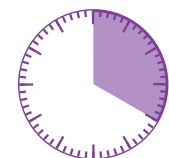


Keep these instructions for future reference as they contain important information. Please read all instructions before beginning assembly and set-up.

You will need:

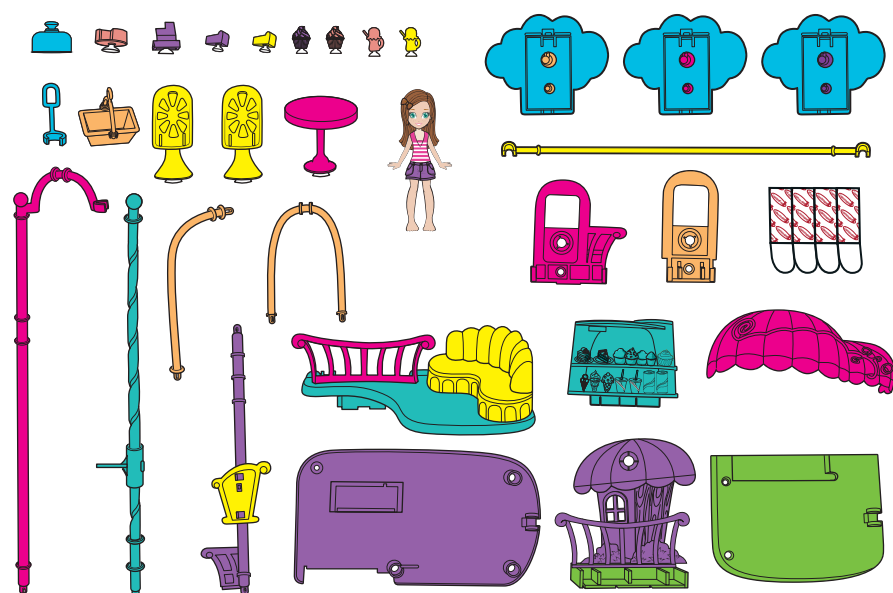


Approximately
3 feet of open
wall space



20 minutes

Contents:

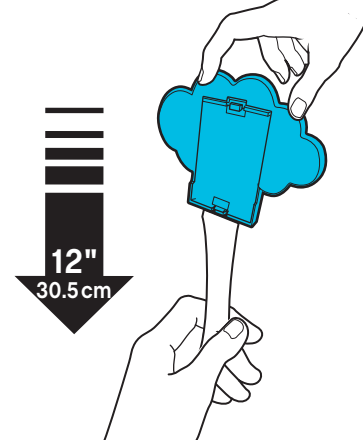


Before applying Command® Strips:

- CAUTION: NEVER use with wallpaper. May not adhere well to vinyl surfaces.
- CAUTION: NEVER hang items over beds.
- Make sure the wall surface is clean and dry. If cleaning is necessary 3M recommends using isopropyl rubbing alcohol. DO NOT use household cleaners.
- Apply strips to surfaces above 50°F (10°C). Adhesive could lose adhesion above 105°F (40°C).

When removing brackets from wall:

- NEVER pull strip towards you.
- NEVER press bracket against wall.
- ALWAYS hold bracket gently in place to prevent it from hitting fingers.
- ALWAYS pull tab on Command® Strip SLOWLY AND STRAIGHT DOWN WALL. Stretch at least 12 inches (30.5 cm) until bracket and strip release.

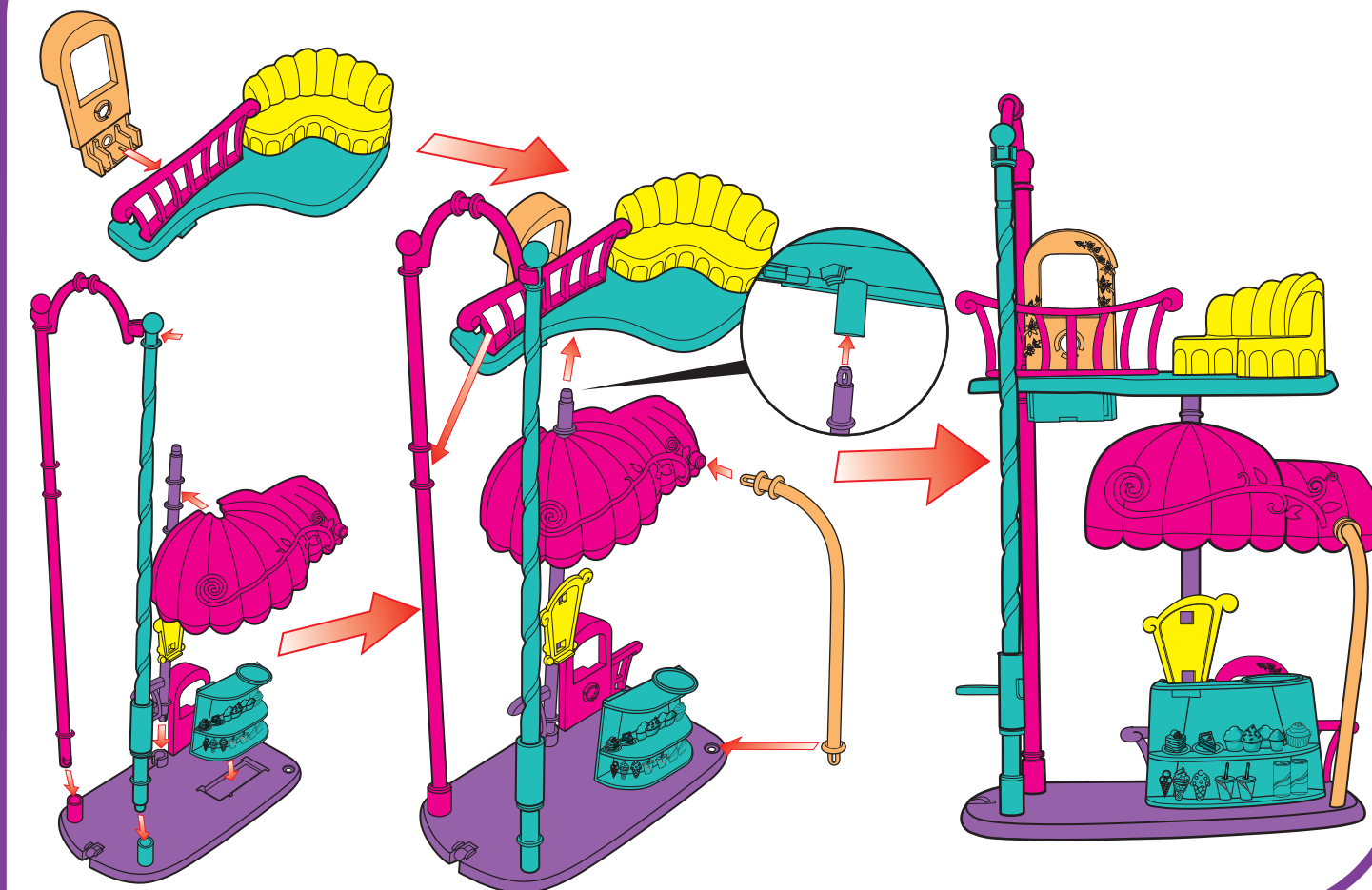


Purchase medium Command® Refill Strips to reapply to your wall.

Just for reference, NOT for printing.

僅供參考，請勿用於印刷。

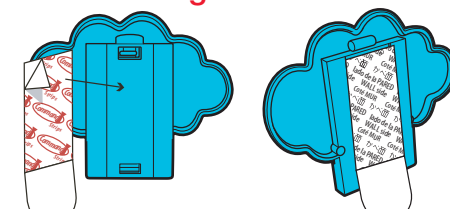
1 Assemble the Playset



2 Apply Command® Strips

Separate strips. Remove red-printed liner from Command® Strips and apply to back of brackets as shown. Make sure the strip tab is accessible for future removal.

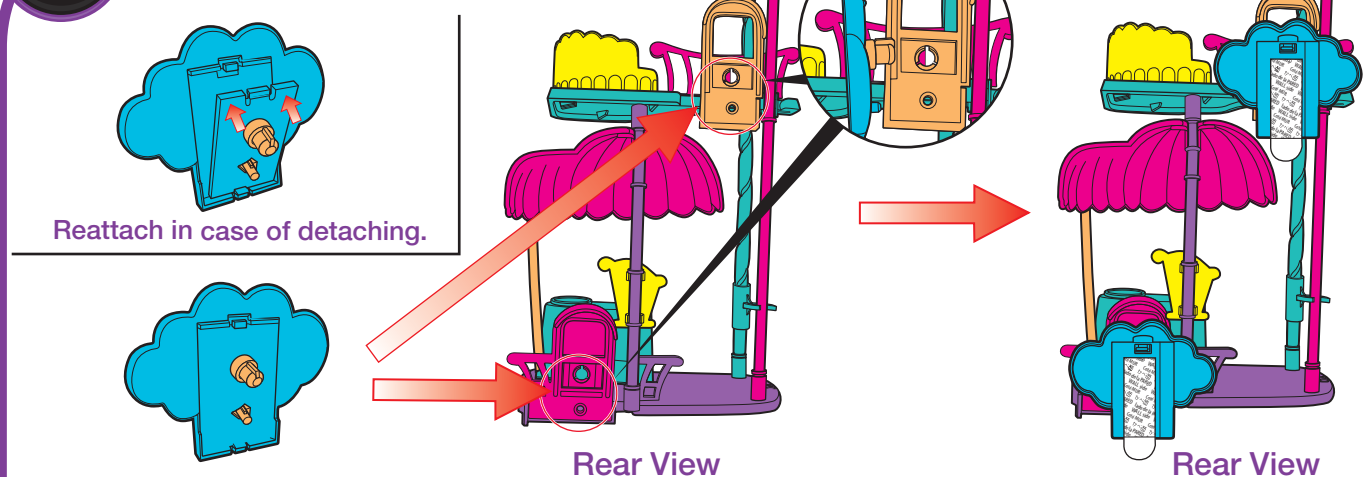
Red Printing = On Bracket



Black Printing = On Wall

NOTE: DO NOT PULL BRACKET OFF WALL without reading removal instructions.

3 Attach Brackets



Reattach in case of detaching.

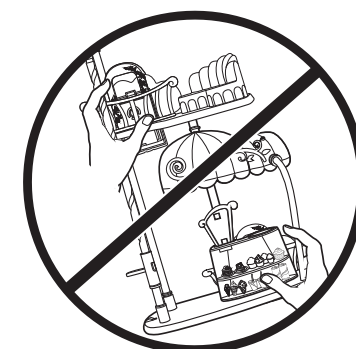
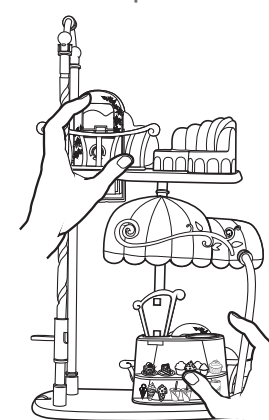
Rear View

Rear View

BACK (GRAYSCALE)

4 Hang Main Playset on Wall

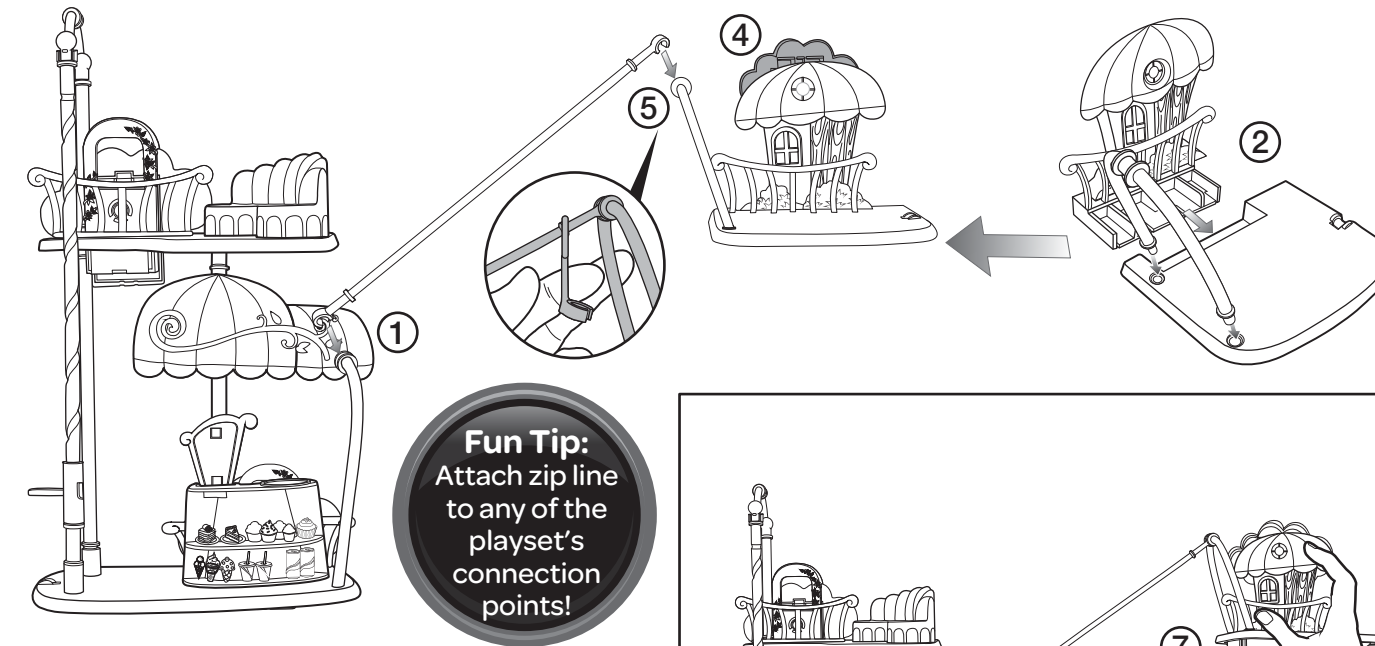
1. Remove black-printed liner from Command® Strip.
 2. Position playset level against the wall.
 3. Press brackets firmly onto wall and hold for 30 seconds.
- NOTE: For optimal adhesion performance, 3M recommends waiting 1 hour before playing.



Press
firmly for
30
seconds

5 Connect Secondary Play Areas

1. Attach zip line to playset on wall.
 2. Assemble play area.
 3. Apply Command® Strip to bracket and remove backing (see Steps 2 & 4.1).
 4. Attach bracket to play area (see Step 3).
 5. Attach zip line to play area.
 6. Position play area to desired location, level against the wall.
 7. Press play area firmly onto wall and hold for 30 seconds.
- NOTE: For optimal adhesion performance, 3M recommends waiting 1 hour before playing.



Fun Tip:
Attach zip line
to any of the
playset's
connection
points!

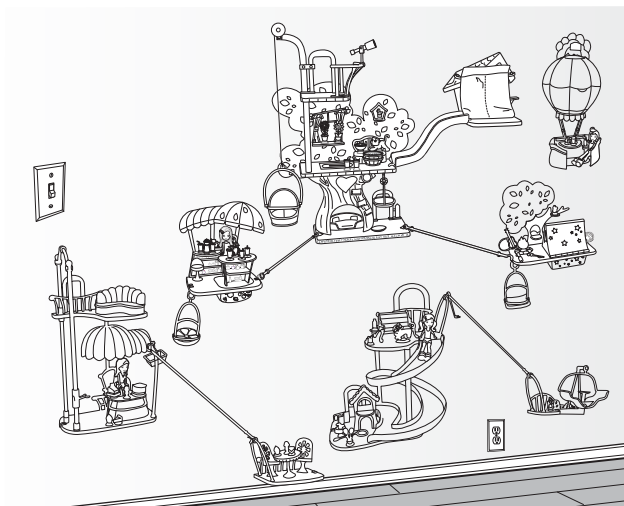


Press
firmly for
30
seconds

6 Connect with other Wall Party™ Playsets (sold separately)

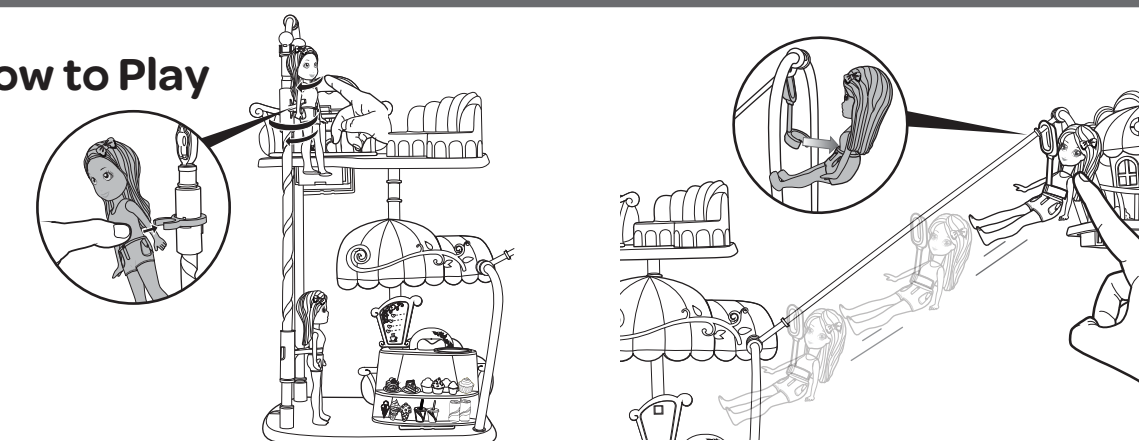
1. Follow steps 5.1 – 5.6 and apply Secondary Play Area steps to other playsets.
2. Connect all playsets together to create your own Wall Party™.

NOTE: Wall Party™ Balloon Ride does not connect to other playsets.



Fun Tip:
Interchange zip
lines, swings, slide,
and elevator with
other playsets!

7 How to Play



8 Reattaching & Removal

1. Mounting plates are designed to break away from the set without causing surface damage.
2. To remove brackets from the wall entirely:
 - a. NEVER pull strip towards you.
 - b. Hold bracket gently to prevent it from snapping fingers. DO NOT press against wall.
 - c. Grab tab on Command® Strip and SLOWLY STRETCH STRAIGHT DOWN ALONG WALL AT LEAST 12 INCHES until bracket and strip release.
3. Purchase medium Command® Refill Strips to reapply to your wall.



Command® Strips are a product of 3M. For further information visit command.com.
NOTE: Apply strips to surfaces above 50°F (10°C). Adhesive could lose adhesion above 105°F (40°C).
CAUTION:
DO NOT use with wallpaper. May not adhere well to vinyl surfaces.
DO NOT hang items over beds.
3M and Command are trademarks of 3M.
© 3M 2012. All Rights Reserved.
©2012 Mattel and/or Origin Products Ltd. All Rights Reserved. Mattel, Inc., 636 Girard Avenue, East Aurora, NY 14052, U.S.A.
1-800-524-8697. Mattel Australia Pty. Ltd., Richmond, Victoria, 3121. Consumer Advisory Service - 1300 135 312. Mattel East Asia Ltd., Room 1106, South Tower, World Finance Centre, Harbour City, Tsimshatsui, HK, China. Dimport & Diedarkan Oleh: Mattel SEA Ptd Ltd. (993532-P) Lot 13.5, Menara Lien Hoe, Persiaran Tropicana Golf Country Resort, 47410 PJ. Tel: 03-78803817, Fax: 03-78803867. service.mattel.com



X8545-0920